



24 St Clements Gardens, St Clement, Jersey, JE2 6QJ
£599,000

St Clements Gardens, St Clement, JE2 6QJ

NEW PRICE : Close to Samares Manor and the golf course, this property offers everything you need from a family home. The property has 2 parking spaces and a large south facing garden backing onto FB playing fields. The accommodation currently comprises living room, separate kitchen/breakfast room, conservatory leading through to garden. Upstairs there are 3 bedrooms and a family shower room with separate wc. With Waitrose just around the corner and the beach just a few minutes walk away, this property is the perfect family home. It is worth noting that the property had a new roof fitted this year. Sole Agents. No chain involved.

VIEWING

Please call Slomans, Sole Agents on 87 97 87. Please note that all areas and measurements given in these particulars are approximate and rounded. The text, photographs and floor plans are for general guidance only.

ANTI MONEY LAUNDERING REGULATION

Once an offer is accepted and negotiations for the purchase of a property are entered into, the prospective purchasers will be asked to produce photographic identification (passport or driving licence) and proof of residency documentation eg, a current utility bill together with confirmation of source of funds. This is in order for us to comply with the current Money Laundering Legislation

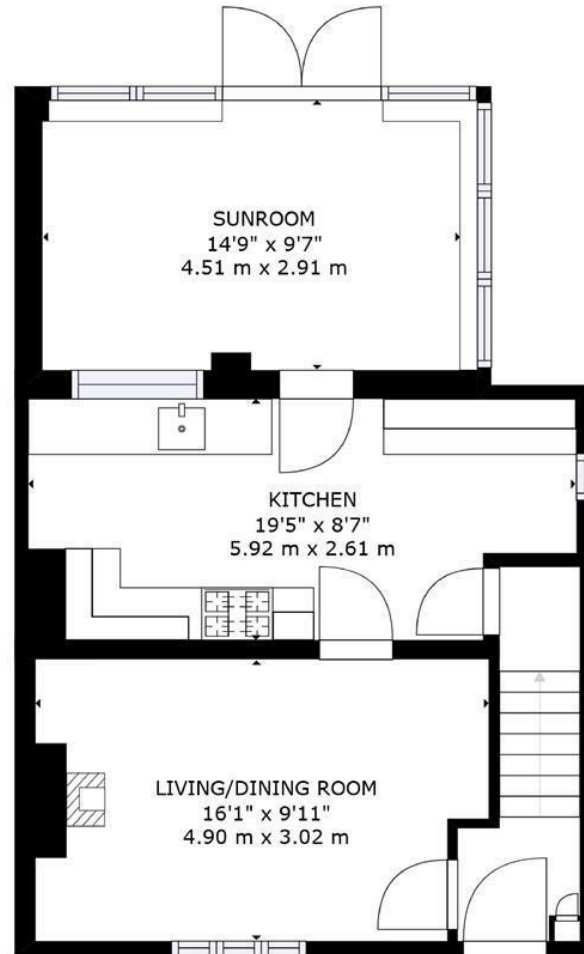
FREE VALUATION

Would you like to know what your own home is worth? If you would like a free verbal valuation please do not hesitate to contact us on 87 97 87

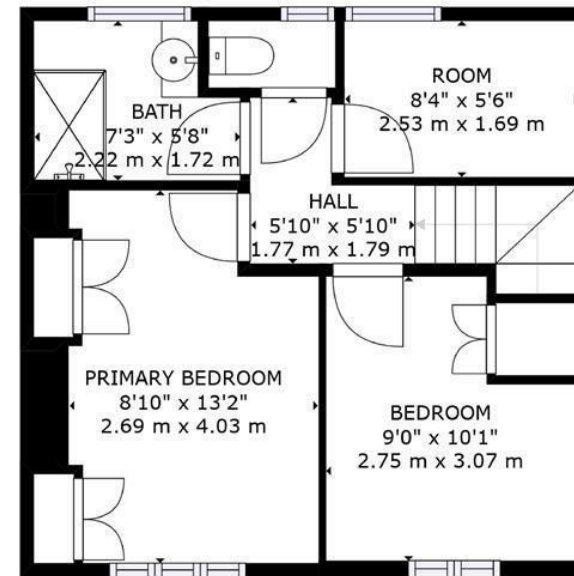
WHAT3WORDS

///chucks.teach.burn





FLOOR 1



FLOOR 2

GROSS INTERNAL AREA
FLOOR 1: 537 sq. ft, 50 m², FLOOR 2: 363 sq. ft, 34 m²
TOTAL: 900 sq. ft, 84 m²
SIZES AND DIMENSIONS ARE APPROXIMATE, ACTUAL MAY VARY.

